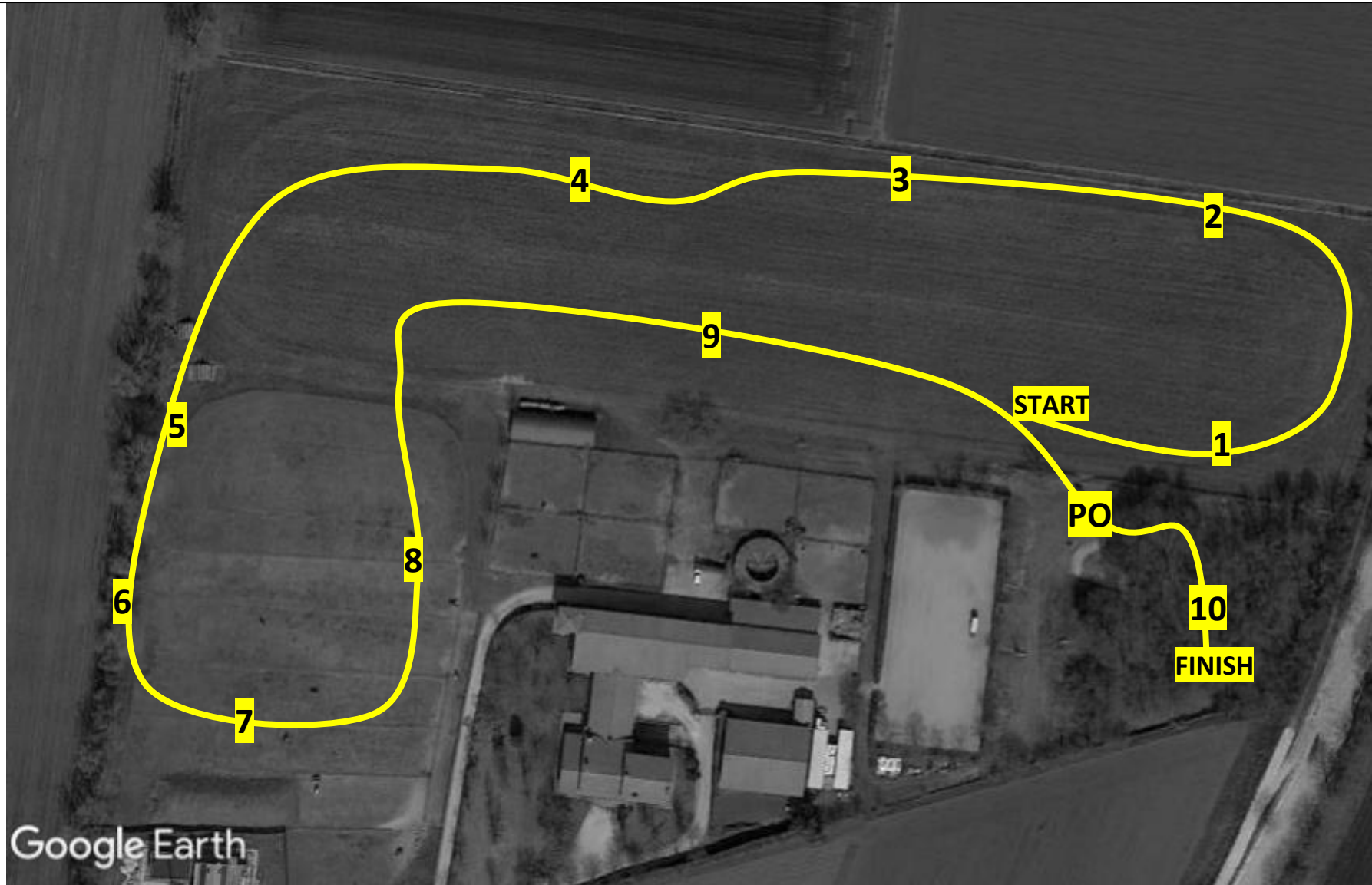


# C.E. ALBERERIA

CAT CN 60 NUMERI SFONDO ROSSO L: 1000 mt V 400 m/min T:2'30"



- 1 TRONCO
- 2 CARRIOLA
- 3 PANCHINA
- 4 GNOMI
- 5 MATITA
- 6 TRONCO
- 7 TRONCO
- 8 VAGONE
- 9 TRONCO
- PO
- 10 GHIANDE